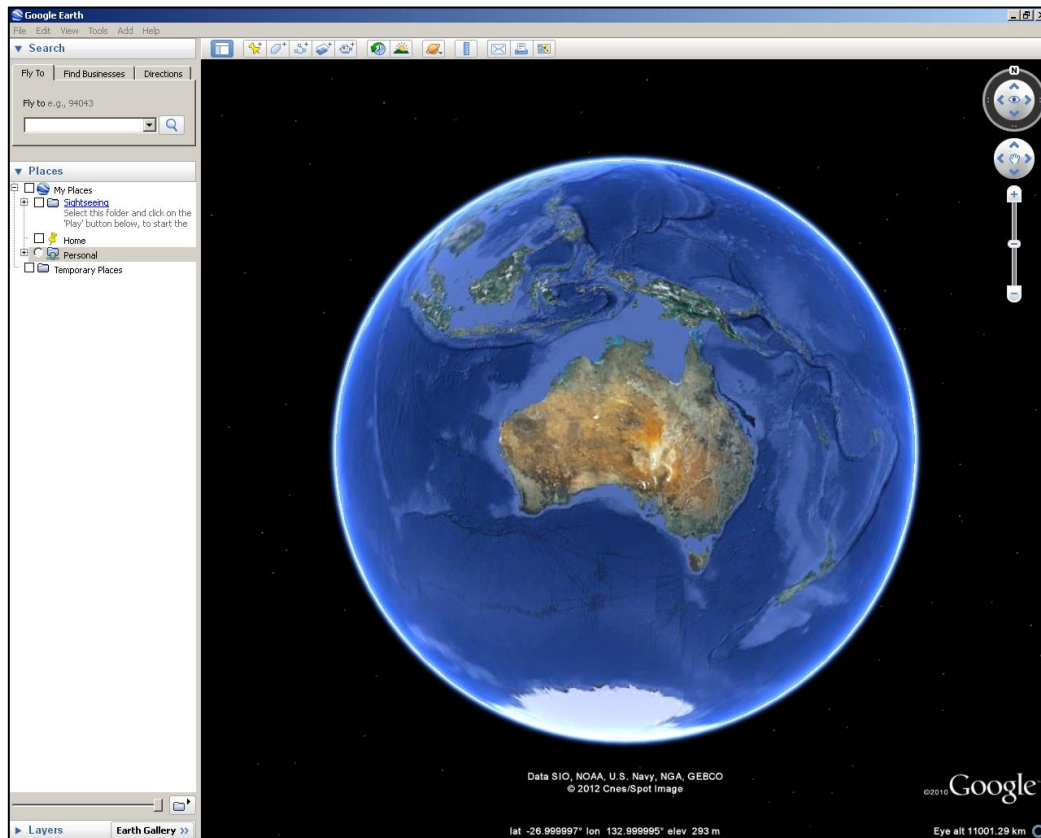


Setting Up Find-a-PMO in Google Earth

These instructions pertain to setting-up the Find-a-PMO application in Google Earth. Find-a-PMO displays the location and contact details of each Port Meteorological Officer (PMO) in the global PMO network.

1. Open Google Earth

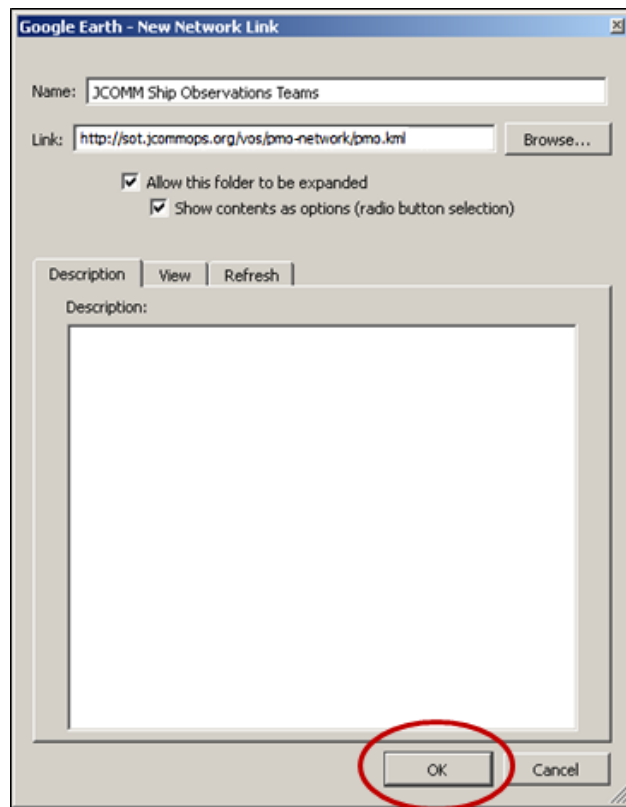


2. On the toolbar, click on **Add** then select **Network Link**.

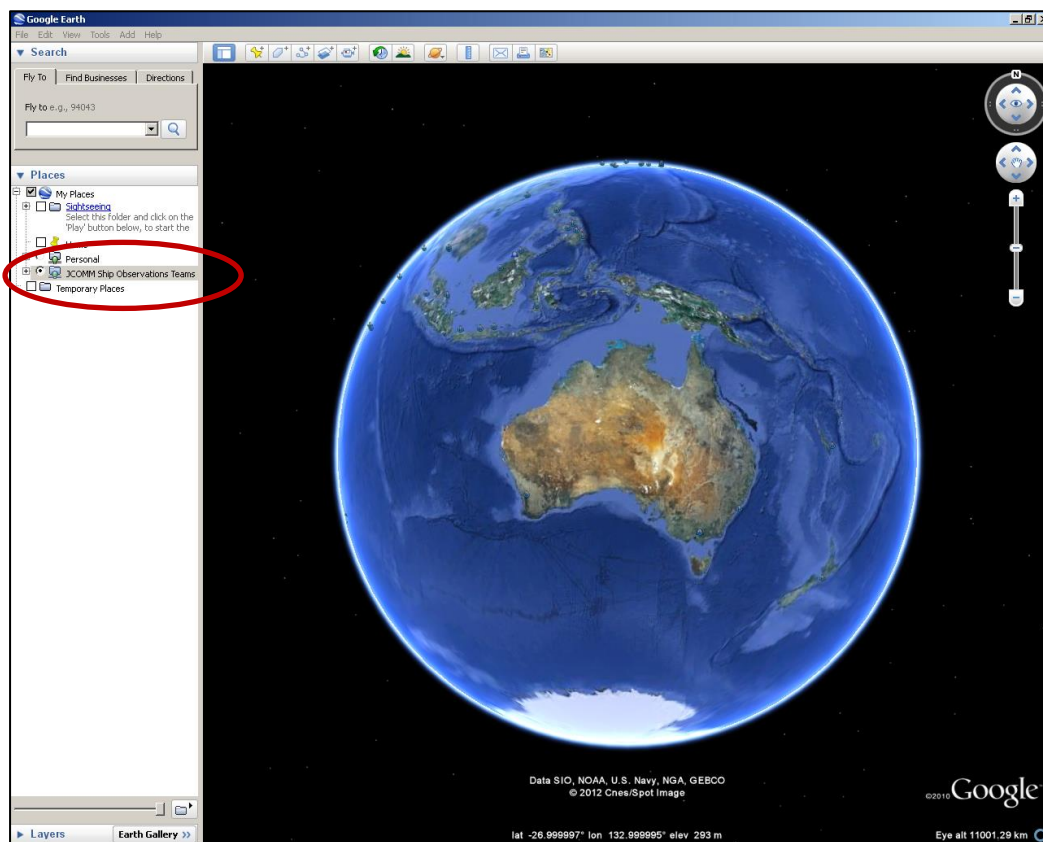


3. In the New Network Link dialogue box:

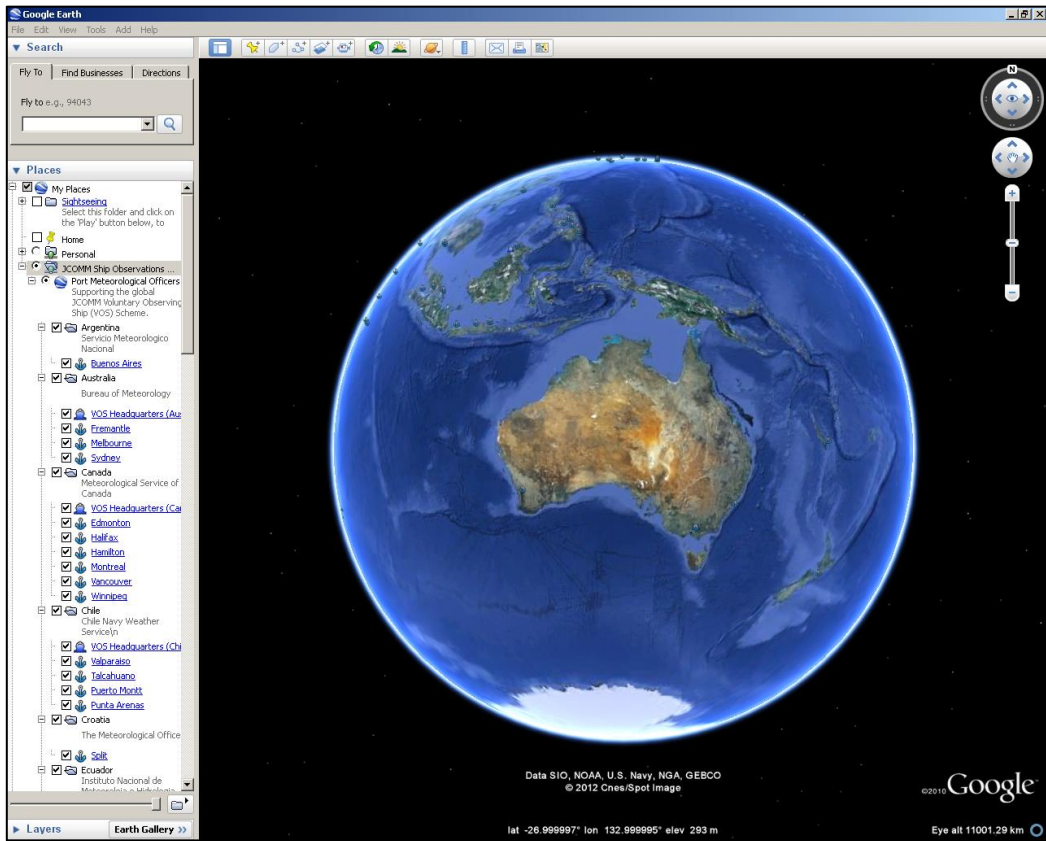
- a. In the **Name** box type **JCOMM Ship Observations Team**.
- b. In the **Link** box type <http://sot.jcommops.org/vos/pmo-network/pmo.kml>.
- c. Tick the check box for **Allow this folder to be expanded**.
- d. Tick the check box for **Show contents as options (radio button selection)**.
- e. Click on the **OK** button.



4. Check that **JCOMM Ship Observations Team** is listed under **My Places** with a checked radio box.



5. If the complete list of PMOs is not visible, click on the **+** symbol adjacent to the radio button.



6. Double click on **JCOMM Ship Observations Team** to display the PMO locations, centred on WMO.

